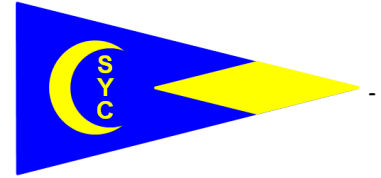


CRESCENT SAIL YACHT CLUB



85th ANNUAL REGATTA

SATURDAY, AUGUST 25, 2018

FLAG OFFICERS

Commodore
Vice Commodore
Rear Commodore
Fleet Captain

Jim Lieder
Champ Glover
Dave Simon
Tim Pruss

REGATTA COMMITTEE

Vice Commodore Champ Glover

Sue Lieder
Dale Benedict
Bob and Rosemary Brasie
Stu and Mary Dees
John Broman
Trish Wood
Doug and Cara Scheibner
Com. Kevin and Allison Sherry
Com. Tom and Karen Srigley
Com. Terry and Marilyn Stocker
Richard and Judy Thoma
Com. Charlie Todd and Barb Schmid
Mike O'Reilly

Nancy Piech
Lynn Rask
Com. Loretta Rehe
Jane Rupp
Dave and Jan Gaden
Com. Dick Green and Carol Lynn
Jim and MaryAnn Hull
Com. Ron and Kathy Jacksy
Diane Ohman
Dennis Kwasny
Judy March
Gary and Gloria Barker

RACE MANAGEMENT COMMITTEE

Regatta Chairperson
Club Race Officer

Vice Commodore Champ Glover
Vice Commodore Champ Glover

D & E COURSE

Principal Race Officer
Team Leader

Mr. George Griswold
Com. Karen Fink DBC

F COURSE

Principal Race Officer
Team Leader

V.Com. Champ Glover CSYC
Com. Anne Gooch TRYC

DRYA RACE MANAGEMENT COMMITTEE

Com. Tom Vickers CSYC (Chair)
Mark Baker DYC
Judy Morlan GPSC
Com. Pamela Rupinski DBC
Judy Francino
Com. Bill Spencer NSSC/LSSC
Com. Danielle Templeton LSSC
Com. Edwin C. Theisen, Jr. DYC
Denise Spencer
Com David Spiers EBC/DRYA

Com. Michael J. McGuire LSSC/GLYC
Matt Bounds NCYC (Senior Protest Judge)
Gordon Morlan GPSC
Doug Gentry
Com. Norm Samra GPSC
George Heitmanis DYC/BYC
Lyn King CSYC/GPSC
Com. F. Stellingwerf, EBC
Michele Davis

DRYA Race Management Committee participants and other guests of the Race Committee are requested to board Committee Boats by 0830 hours.

HONORARY JUDGES

The 2018 DRYA Member Commodores

Chairman -- Com. Jim Lieder CSYC

Com. Scott Krucki AYC
Com. Lynda King DBC
Com. Dale MacPherson DRYA
Com. Larry Dorr EBC
Com. Roy Baker GIYC
Com. Fred Chapman GPSC
Com. Ray Litt GSCD
Com. Barbara Heldt NCYC
Com. James Goldenbogen PHYC
Com. Ryan Masse SPSC
Com. Jim Sanger SYC
Com. Ted Saxby WYC

Com. Brad Kimmel BYC
Com. Philippe Roncier DSC
Com. Raymond Batt DYC
Com. Kevin Wilson FYC
Com. Alan Taub GLYC
Com. Sean Schotthoefer GPYC
Com. Denis Nicole LSSC
Com. Laurel Hurite NSSC
Com. Keith Beasley PYC
Com. Sally Preston SS
Com. Jim Balogh TYC
Com. Van Hauswirth GPC

COMMITTEE BOATS

Chairman – Bob Brasie

TBD by CSYC		F Course Control Boat
Upbeat	Dave and Jan Gaden	D/E Course Stake Boat
Footloose	Mike O'Reilly	D/E Course Stake Boat
Lucky	Com. Frank Kunick LSSC and Dr. Jack Van Ryn DYC	D/E Course Patrol Boat
Getaway Car	Com. Dennis Cotter GPSC and Tristan Cotter	F Course Patrol Boat
Sayonara	Com. Charlie Todd and Barb Schmid	D/E Course Stake Boat

RACE FESTIVITIES

PARKING

Parking on CSYC property is restricted to CSYC members, DRYA race officials and visiting flag officers. Crews and non-CSYC members should park on Lakeshore Drive.

BEFORE THE REGATTA

A limited number of overnight moorings will be available in our harbor for Friday night **by reservation only**. Your reservation must be made by Thursday, August 23, 2018 by calling our Fleet Captain, Tim Pruss at (313) 587-6448.

Rafting in our harbors on the morning of the race is also available from 7:00 AM on a first come, first served basis.

Mooring will be provided subject to the following conditions:

1. Owners assume all responsibility for loss or damage to, or caused by, their boats, and
2. All boats must be manned by 9:00 AM so that boats may be freed in succession without delay.

DURING THE REGATTA

Spectators are most welcome. If you are not participating, Crescent is a great place to view the races. All courses are visible from the club. The start and finish line for the D and E courses is in front of the club and the F course is within sight. View close to the action on the outer seawall or under a shade tree on the grounds.

AFTER THE REGATTA

We will have libations and snacks on the front lawn from 4:00 to 6:00 PM open to all competitors, CSYC members, DRYA race committee and guests.

Dinner will be available from 6:00 to 7:30 PM for \$18 for BBQ chicken or grilled steak. A vegetarian option is available for \$15. Side dishes include corn on the cob, salad, baked potato and rolls, as well as dessert and beverages. Hot dogs, including side dishes, dessert and beverages are available for \$5 for children age 12 and under.

You must reserve your dinner tickets by Thursday, August 23
at https://events.membersolutions.com/event_register.asp?content_id=76145

Please select your entrée when you make your reservation.

AWARDS will be presented after dinner at approximately 8:00 PM.

TROPHIES

COM. HERBERT J. MAINWARING TROPHY

Awarded to the first-place, overall Division 1 Boat.

RICHARD L. BLANCHARD MEMORIAL TROPHY

Awarded to the CSYC skipper placing best in the largest fleet of one-design boats under 21 feet.

JAMES POWELL MEMORIAL TROPHY

Awarded to the first-place boat racing in the Crescent Sloop class.

MAYNARD HEATH MEMORIAL TROPHY

Awarded to the first-place boat racing in the Star Class.

SAILING INSTRUCTIONS - ALL COURSES

The Organizing Authority for this regatta is CSYC. The 2018 DRYA Notice of Race (“NOR”) and Standard Sailing Instructions (“SI”) for “A” and “C” Courses are adopted except as modified below. References in the DRYA SI to its "A" Course shall apply to the CSYC "D" and "E" Courses. References in the DRYA SI to its "C" Course shall apply to the CSYC "F" Course. DRYA Olympic Course specific instructions and the specific Sailing Instructions for “A” Course Only are deleted.

Copies of the CSYC SI are available at CSYC. Copies of the CSYC SI and the DRYA SI are available from DRYA and online at <http://drya.org/HTMLpages/SailingInstructions.html>

Detroit Regional Yacht - Racing Association
23915 Jefferson, Suite 1, St. Clair Shores, MI 48080
(586) 778-1000

REGISTRATION: For those boats **NOT** registered for the DRYA Counter Series for 2018 -- **All guest boats must be pre-registered by 5:00 PM Tuesday, August 21, 2018 (“the deadline”)**. Use the online form at: www.bit.ly/RegisterDRYArace . If you **are registered** with DRYA and **wish to change classes** for this race only (i.e. race in CSYC JAM), you must also register online at www.bit.ly/RegisterDRYArace by the deadline.

RATINGS: If a boat wishing to race on either D or E Course does not have a DRYA rating (Standard spinnaker certificate or PJAM handicap) contact the DRYA office **as soon as possible** and at least 5 days prior to race day to obtain a certificate. **Boats racing on the F Course do not require a DRYA PHRF certificate.**

If you are racing in CSYC JAM or DBL JAM you must have a rating that has been assigned by DRYA. If you don't have one you can get a PJAM rating via the DRYA web site for \$10 and you should **apply as soon as possible** at least 5 days prior to race day at: http://drya.org/Forms/2018/2018_PJAM_Form_v3.pdf . **State on the form** that you need the rating for the CSYC race. **YOU MUST ALSO REGISTER** by the deadline at www.bit.ly/RegisterDRYArace

If you are racing in DBL SPIN you must have a Spinnaker rating that has been assigned by DRYA. If you don't have one you can get one via the DRYA web site for \$35 and you should **apply as soon as possible** at least 5 days prior to race day at: <http://drya.org/Forms/2018/2018%20PHRF%20Form.pdf> . Email it to: barbseskiDRYA@gmail.com . **State on the form** that you need the rating for the CSYC race. **YOU MUST ALSO REGISTER** by the deadline at www.bit.ly/RegisterDRYArace .

If you are a DRYA member the PJAM rating certificate is free and adding the Spinnaker rating is \$30.
If you have rating questions, email C. Drummond at cdrummo1@ford.com.

AGREEMENT TO ASSUME RISK: In consideration of being permitted to enter this regatta, and being fully knowledgeable of the risks of sailing as a competitive sport, all contestants, crew members and guests aboard voluntarily assume all risks associated with participating in this regatta. All contestants, crew members, and guests aboard a competing boat shall assure that the boat has all the required United States Coast Guard equipment, as well as other safety equipment aboard the boat, and that the boat shall be seaworthy in hull, rig and gear, and shall be competently manned. All contestants, crew and guests aboard acknowledge and agree that neither Crescent Sail Yacht Club, nor its officers, members, the Race Committee, employees or agents assume or accept any liability for property damage to any boat or personal injury to a skipper, crew member or guest suffered while participating in this race, including pre-race and post-race activities. The skipper acknowledges and agrees that the decision to start or continue the race is solely the responsibility of the skipper. This paragraph is in addition to the Agreement to Assume Risk in the DRYA Sailing Instructions .

PROTESTS: A boat electing to protest shall follow the procedure described in the DRYA Sailing Instructions.

NOTICES TO COMPETITORS: Notices will be posted on the official notice board located in the CSYC clubhouse.

CHANGES TO THE SAILING INSTRUCTIONS: Any change to the sailing instructions will be posted by 9:00 AM on the day it will take effect, except that any change to the schedule of races will be posted by 8:00 PM on the day before it will take effect.

INSTRUCTIONS FOR BOTH D & E COURSES

D & E COURSE STARTING TIMES

ATTENTION SIGNAL (1 Minute before Warning)
 FIRST WARNING SIGNAL 10:30 AM

Start # Class	Rating	Class and Start Flag
DIVISION I		
E COURSE		
PHRF 3	100-150	#1
PHRF 2	60 – 99	F
PHRF WARHORSE	99 & Lower	W
BENETEAU 36.7	-	K
J-120	-	#8
PHRF 1	59 & Lower	#7
GL 70	-	#9
DIVISION II		
D COURSE		
C & C 35	-	0
PHRFASM	60 – 300	E
DBL JAM/ DBL SPIN	-	G/F
CSYC JAM	-	CSYC Burgee
PHRF 4	151 and higher	2 nd Substitute
CAL 25	-	Class Logo
S2 7.9	-	Class Logo
EXPRESS 27	-	Class Logo
MULTI-HULL	-	#6

TIME LIMIT: On the E Course, the time limit for each class will be eight hours after the start time for that class. In the event the E Course is shortened before the start, as described herein, the time limit for each class will be six hours

On the D Course, the time limit for each class will be six hours after the start time for that class

All boats on both courses finishing after 7:00 PM are instructed to take their own finishing time and report it to the CSYC Race Committee within one hour after finishing.

When possible record the boat ahead and boat astern.

STARTING AND FINISHING LINES: The starting area will be located off CSYC. The starting line will be between a green flag or pyramid and a RC Flag on the Race Committee Station located on the CSYC outer seawall.

The finish line will be between a green flag or pyramid and the RC flag on the Race Committee Station. Boats shall finish downstream, leaving the green flag or pyramid to port.

A limit mark (red/green horizontal bands) may be set near the inboard end (seawall end) of the starting/finishing line. If a boat touches this mark or passes between this mark and the seawall that boat breaks Racing Rules of Sailing (“RRS”) 31.

OVER EARLY RACE COMMITTEE BOAT: A Race Committee boat may be stationed at the outboard (starboard) end of the starting line to assist the Race Committee in identifying boats over early. DRYA Sailing Instructions Paragraph 10, Limit Marks, applies to the Race Committee vessel.

SHORTENED COURSE PRIOR TO THE START- E COURSE ONLY: If the race committee displays Code Flag “T” from the Race Committee Station prior to the start boats shall sail the D course.

SHORTENED COURSE AFTER THE START: If Code Flag “J” is displayed from a Race Committee boat near a rounding mark then boats shall round the course mark near the Race Committee boat and sail direct to the finish line. The Race Committee vessel displaying the visual signal will attempt by the use of a sound signal to alert the boats of the shortened course as the boats approach. This changes RRS 32 as it pertains to shortening the course. If the race is shortened, the course distance used for handicapping will be adjusted accordingly.

WATER INTAKE: A buoy marking the water intake obstruction may be placed between the Grosse Pointe Farms Pier and CSYC for safety information purposes. This buoy is not a mark of the D or E courses.

CLASS FLAGS: Competitors in the Cal 25, S2 7.9 and Express 27 starts are not required to fly a class flag.

RADIO MONITORING: Boats are requested to monitor **VHF 72** from 9:30 AM until after finishing.

E COURSE INSTRUCTIONS

A shape or flag will be displayed from the Race Committee Station as follows:

Red shape or flag: leave marks to Port.
Green shape or flag: leave marks to Starboard.

Boats sailing the E Course shall sail the following course after the start:

RED SHAPE / FLAG

	To Mark	Heading	Distance
Leg 1	C	057	6.0 nm
Leg 2	B	339	3.6 nm
Leg 3	Finish	210	7.6 nm

GREEN SHAPE / FLAG

	To Mark	Heading	Distance
Leg 1	B	030	7.6 nm
Leg 2	C	159	3.6 nm
Leg 3	Finish	237	6.0 nm

All courses are magnetic and all distances are nautical miles. 17.2 nautical miles will be used for handicapping.

D COURSE INSTRUCTIONS

A shape or flag will be displayed from the Race Committee Station as follows:

Red shape or flag: leave marks to Port.

Green shape or flag: leave marks to Starboard.

Boats sailing the D Course shall sail the following course after the start:

RED SHAPE / FLAG

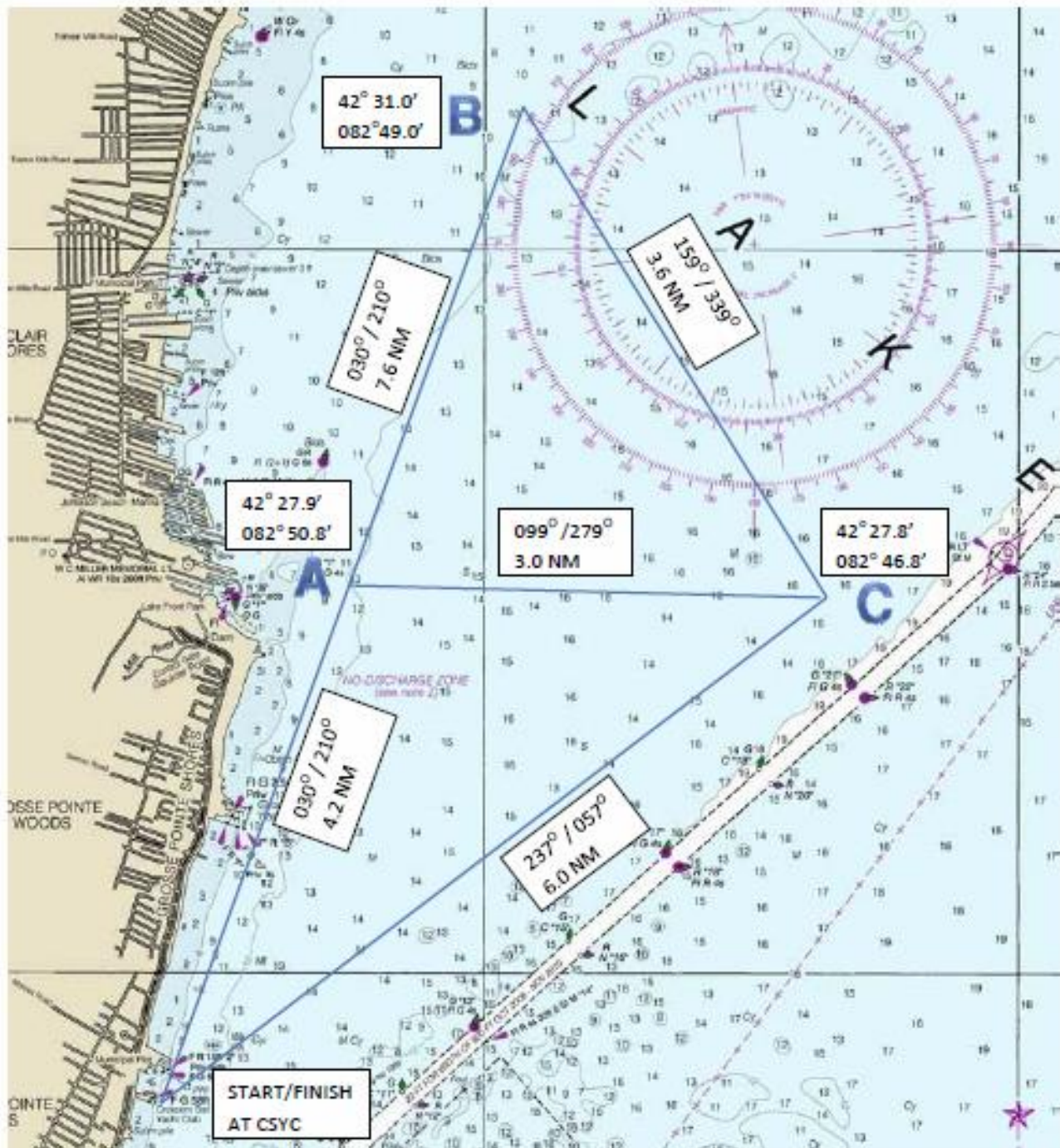
	To Mark	Heading	Distance
Leg 1	C	057	6.0 nm
Leg 2	A	279	3.0 nm
Leg 3	Finish	210	4.2 nm

GREEN SHAPE / FLAG

	To Mark	Heading	Distance
Leg 1	A	030	4.2 nm
Leg 2	C	099	3.0 nm
Leg 3	Finish	237	6.0 nm

All courses are magnetic and all distances are nautical miles. 13.2 nautical miles will be used for handicapping.

CSYC REGATTA D AND E COURSES



This image is NOT to be used for navigation and is not created to any scale.

For handicapping purposes:

"E" Course is 17.2 NM

"D" Course is 13.2 NM

F COURSE INSTRUCTIONS

F COURSE STARTING TIMES

ATTENTION SIGNAL (1 Minute before Warning)
FIRST WARNING SIGNAL 10:30 AM

Start # Class	Course	Start Flag
Multi-hull	Long Course	Class Logo
Star	Short Course	Class Logo
J-70	Short Course	Class Logo
Thistle	Short Course	Class Logo
Lightning	Short Course	Class Logo
Crescent	Short Course	Class Logo
Cal 20	Short Course	Class Logo
Flying Scot	Short Course	Class Logo
Snipe/Other	Short Course	Class Logo

COURSE LOCATION

The starting area shall be located in the area between CSYC and the Grosse Pointe Club, west of the shipping channel. All boats are instructed to locate the main Race Committee Boat which will display Code Flag "L" until it is on station.

COURSE

The course will be a windward-leeward course with a total of four legs. Refer to sailing instruction diagram for F Course below. Reference in the diagram to "C" Course shall mean "F" Course. All courses are magnetic and all distances are nautical miles and approximate.

SECOND RACE

Conditions permitting, the Race Committee may have two races. Code Pennant "#2" displayed on the Finishing Line Race Control Boat means that the Race Committee has scheduled a second race. When one or more class flags are displayed below the Code Pennant, the second race is only for the classes whose class flags are displayed.

The Race Committee will attempt to finish the majority of boats in the last race by 4:30 PM. When two races are sailed, they shall be scored as prescribed in the DRYA Handbook.

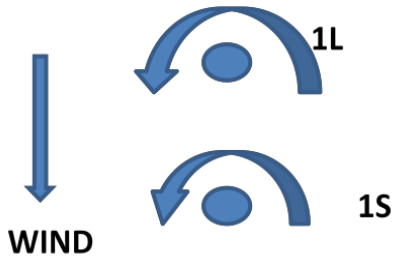
RADIO MONITORING

The "F" Course Race Committee will monitor **VHF 71**.

CSYC F COURSE DIAGRAMS

C COURSE 1

SHORT COURSE START-1S-2-1S-FINISH
 LONG COURSE START-1L-2-1L-FINISH



C COURSE 2

SHORT COURSE START-1S-2-1S-Finish
 LONG COURSE START-1L-2-1L-FINISH

