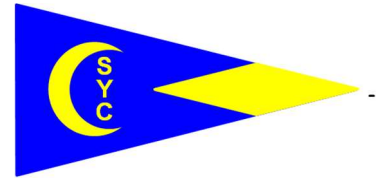


CRESCENT SAIL YACHT CLUB



84th ANNUAL REGATTA

SATURDAY, AUGUST 26, 2017

FLAG OFFICERS

Commodore
Vice Commodore
Rear Commodore
Fleet Captain

Jerry Lohmeyer
Jim Lieder
Champ Glover
Tim Pruss

REGATTA COMMITTEE

Vice Commodore Jim Lieder

Sue Lieder
Dale Benedict
Bob and Rosemary Brasie
Stu and Mary Dees
John Broman
Trish Wood
Doug and Cara Scheibner
Com. Kevin and Allison Sherry
Com. Tom and Karen Srigley
Com. Terry and Marilyn Stocker
Richard and Judy Thoma
Com. Charlie Todd and Barb Schmid

Nancy Piech
Lynn Rask
Com. Loretta Rehe
Jane Rupp
Dave and Jan Gaden
Com. Dick Green and Carol Lynn
Jim and MaryAnn Hull
Com. Ron and Kathy Jacksy
Diane Ohman
Dennis Kwasny
Judy March
Gary and Gloria Barker

RACE MANAGEMENT COMMITTEE

Regatta Chairperson
Club Race Officer

Vice Commodore Jim Lieder
Kurt Wellenkotter

D & E COURSE

Club Race Officer
Principal Race Officer
Deputy Principal Race Officer

Kurt Wellenkotter
Com. Norm Samra GPSC
Com. Karen Fink DBC

F COURSE

Club Race Officer
Principal Race Officers

Com. Tom Srigley CSYC
Com. Anne Gooch TRYC/DRYA and Com. Ron Spies FYC

DRYA RACE MANAGEMENT COMMITTEE

Fred Baer BYC/GPSC	Linda Evo LSSC
Cay Bernock	Debbie Pingree
Judy Morlan GPSC	Danielle Templeton LSSC
George Heitmanis DYC/BYC	Com. Mike McGuire LSSC/DRYA
Com. Alan Minsterman DYC/BYC	Michelle Davis
Com. David Coleman DYC/GPSC	William McIntyre DYC
Linda Minsterman DYC/BYC	Mark Baker
Joe Flack	Com. Pamela Rupinski DBC
Barb Samra GPSC	Com. Ed Theisen DYC
Yvonne McRobbie LMSC	Matt Bounds NCYC (Senior Protest Judge)
Lyn King GPSC	

DRYA Race Management Committee participants and other guests of the Race Committee are requested to board Committee Boats by 8:30 a.m.

HONORARY JUDGES

The 2017 DRYA Member Commodores
Chairman -- Com. Jerry Lohmeyer CSYC

Com. Larry Mintz AYC	Com. Hans Brieden BYC
Com. Richard Morris DBC	Com. Jessy Soria DSC
Com. Brian Lang DRYA	Com. Patricia Thull O'Brien DYC
Com. Alberta Curry EBC	Com. Steve Gravlin FYC
Com. Rob Carrier GIYC	Com. Herman Eichner GLYC
Com. Peter Baumann GPSC	Com. Blaise Klenow GPYC
Com. John Goins GSCD	Com. John Riess LSSC
Com. Steven Morrow NCYC	Com. John Quinlan NSSC
Com. Dale Conger PHYC	Com. Geoffrey Nelson PYC
Com. Kelly Johnson SPSC	Com. Sally Preston SS
Com. Mike Walker SYC	Com. Jerry Chauvin TYC
Com. Dan Caster WYC	Com. Geoffrey Horst GPC

COMMITTEE BOATS

Chairman – Bob Brasie

Gypsy K	Com. Tom Srigley	F Course Control Boat
Upbeat	Dave and Jan Gaden	Stake Boat
Blue Dolphin	Jim and Mary Ann Hull	Stake Boat
Lucky	Com. Frank Kunick LSSC and Dr. Jack Van Ryn DYC	D & E Course Patrol Boat
Getaway Car	Com. Dennis Cotter GPSC	F Course Patrol Boat
Sayonara	Com. Charlie Todd and Barb Schmid	Stake Boat

RACE FESTIVITIES

PARKING

Parking on CSYC property is restricted to CSYC members, DRYA race officials and visiting flag officers. Crews and non-CSYC members should park on Lakeshore Drive.

BEFORE THE REGATTA

A limited number of overnight moorings will be available in our harbor for Friday night **by reservation only**. Your reservation must be made by Thursday, August 24, 2017 by calling our Fleet Captain Tim Pruss at (313) 587-6448.

Rafting in our harbors on the morning of the race is also available from 7:00 AM on a first come, first served basis.

Mooring will be provided subject to the following conditions:

1. Owners assume all responsibility for loss or damage to, or caused by, their boats, and
2. All boats must be manned by 9:00 AM so that boats may be freed in succession without delay.

DURING THE REGATTA

Spectators are most welcome. If you are not participating, Crescent is a great place to view the races. All courses are visible from the club. The start and finish line for the D and E courses is in front of the club and the F course is within sight. View close to the action on the outer seawall or under a shade tree on the grounds.

AFTER THE REGATTA

We will have libations and snacks on the front lawn from 4:00 to 6:00 PM open to all competitors, CSYC members, DRYA race committee and guests.

Dinner will be available from 6:30 to 8:00 PM for \$18. Your entrée choices are BBQ chicken, grilled NY strip steak or vegetarian lasagna. Side dishes include corn on the cob, green salad, baked potato and rolls, as well as dessert and beverages. Hot dogs, including side dishes, dessert and beverages are available for \$5 for children age 12 and under.

You must reserve your dinner tickets by Thursday, August 24
at https://events.membersolutions.com/event_register.asp?content_id=70969

Please select your entrée when you make your reservation.

AWARDS will be presented after dinner at approximately 8:00 pm.

TROPHIES

COM. HERBERT J. MAINWARING TROPHY

Awarded to the first-place, overall Division 1 Boat.

RICHARD L. BLANCHARD MEMORIAL TROPHY

Awarded to the CSYC skipper placing best in the largest fleet of one-design boats under 21 feet.

JAMES POWELL MEMORIAL TROPHY

Awarded to the first-place boat racing in the Crescent Sloop class.

MAYNARD HEATH MEMORIAL TROPHY

Awarded to the first-place boat racing in the Star Class.

SAILING INSTRUCTIONS - ALL COURSES

The current 2017 Detroit Regional Yacht - Racing Association ("DRYA") Sailing Instructions ("SI") for all courses are hereby incorporated for this regatta except as modified below. References in the DRYA SI to its "A" Course shall apply to the CSYC "D" and "E" Courses. References in the DRYA SI to its "C" Course shall apply to the CSYC "F" Course.

Copies of these Sailing Instructions are available at CSYC, on the RC boats, from DRYA, and online at <http://drya.org/race2017/RaceResults17.html>

Detroit Regional Yacht - Racing Association
23915 Jefferson, Suite 1
St. Clair Shores, MI 48080
(586) 778-1000

REGISTRATION: For those boats not registered with DRYA, please use the following online form by the deadline shown below: <https://lieder.quickbase.com/db/bmwif7gsg>

If a boat does not have a rating, contact the DRYA office at least 5 days prior to race day to obtain a certificate. Certificates should be attached to the on-line registration form. **If you are registered with DRYA and wish to change classes, you must contact the DRYA to notify it of the change.**

Any notice of class change to the DRYA and ALL registrations must be submitted by Tuesday, August 22, 2017 at 5:00 PM

AGREEMENT TO ASSUME RISK: In consideration of being permitted to enter this regatta, and being fully knowledgeable of the risks of sailing as a competitive sport, all contestants, crew members and guests aboard voluntarily assume all risks associated with participating in this regatta. All contestants, crew members, and guests aboard a competing boat shall assure that the boat has all the required United States Coast Guard equipment, as well as other safety equipment aboard the boat, and that the boat shall be seaworthy in hull, rig and gear, and shall be competently manned. All contestants, crew and guests aboard acknowledge and agree that neither Crescent Sail Yacht Club, nor its officers, members, the Race Committee, employees or agents assume or accept any liability for property damage to any boat or personal injury to a skipper, crew member or guest suffered while participating in this race, including pre-race and post-race activities. The skipper acknowledges and agrees that the decision to start or continue the race is solely the responsibility of the skipper. This paragraph is in addition to the Agreement to Assume Risk in the DRYA Sailing Instructions.

PROTESTS: A boat electing to protest shall follow the procedure described in the DRYA Sailing Instructions.

NOTICES TO COMPETITORS: Notices to competitors will be posted on the official notice board located in the CSYC clubhouse.

CHANGES TO THE SAILING INSTRUCTIONS: Any change to the sailing instructions will be posted by 0900 on the day it will take effect, except that any change to the schedule of races will be posted by 2000 on the day before it will take effect.

INSTRUCTIONS FOR BOTH D & E COURSES

D & E COURSE STARTING TIMES

ATTENTION SIGNAL (1 Minute before Warning)
FIRST WARNING SIGNAL 10:30

Start # Class	Rating	Class and Start Flag
---------------	--------	----------------------

DIVISION I

E COURSE

PHRF 1	59 & Lower	#7
PHRF 2	60 – 99	F
PHRF WARHORSE	99 & Lower	W
BENETEAU 36.7	-	K
PHRF 3	100-150	#1
J-120	-	#8

DIVISION II

D COURSE

PHRFASM	60 – 300	E
DBL JAM / DBL SPIN	-	G/F
PHRF 4	151 and higher	2 nd Substitute
CAL 25	-	Class Logo
S2 7.9	-	Class Logo
EXPRESS 27	-	Class Logo
C & C 35	-	0
CLUB JAM	-	CSYC Burgee
MULTI-HULL	-	#6

TIME LIMIT: On the E Course, the time limit for each class will be eight hours after the start time for that class. In the event the E Course is shortened before the start, as described herein, the time limit for each class will be six hours

On the D Course, the time limit for each class will be six hours after the start time for that class

All boats on both courses finishing after 7:00 pm are instructed to take their own finishing time and report it to the CSYC Race Committee within one hour after finishing.

When possible record the boat ahead and boat astern.

RADIO MONITORING: Boats are requested to monitor **VHF 72** from their preparatory signal until after finishing.

STARTING AND FINISHING LINES: The starting area will be located off CSYC. The starting line will be between a green flag or pyramid and a RC Flag on the Race Committee Station located on the CSYC outer seawall.

The finish line will be between a green flag or pyramid and the RC flag on the Race Committee Station. Boats shall finish downstream, leaving the green flag or pyramid to port.

A limit mark (red/green horizontal bands) may be set near the inboard end (seawall end) of the starting/finishing line. If a boat touches this mark or passes between this mark and the seawall that boat breaks Racing Rules of Sailing (“RRS”) 31.

OVER EARLY RACE COMMITTEE BOAT: A Race Committee boat may be stationed at the outboard (starboard) end of the starting line to assist the Race Committee in identifying boats over early. DRYA Sailing Instructions Paragraph 10, Limit Marks, applies to the Race Committee vessel.

SHORTENED COURSE PRIOR TO THE START- E COURSE ONLY: If the race committee displays Code Flag “T” from the Race Committee Station prior to the start boats shall sail the D course.

SHORTENED COURSE AFTER THE START: If Code Flag “J is displayed from a Race Committee boat near a rounding mark then boats shall round the course mark near the Race Committee boat and sail direct to the finish line. The Race Committee vessel displaying the visual signal will attempt by the use of a sound signal to alert the boats of the shortened course as the boats approach. This changes RRS 32 as it pertains to shortening the course. If the race is shortened, the course distance used for handicapping will be adjusted accordingly.

WATER INTAKE: A buoy marking the water intake obstruction may be placed between the Grosse Pointe Farms Pier and CSYC for safety information purposes. This buoy is not a mark of the D or E courses.

CLASS FLAGS: Competitors in the Cal 25, S2 7.9 and Express 27 starts are not required to fly a class flag.

E COURSE INSTRUCTIONS

A shape or flag will be displayed from the Race Committee Station as follows:

Red shape or flag: leave marks to Port.

Green shape or flag: leave marks to Starboard.

Boats sailing the E Course shall sail the following course after the start:

RED SHAPE / FLAG

	To Mark	Heading	Distance
Leg 1	C	057	6.0 nm
Leg 2	B	339	3.6 nm
Leg 3	Finish	210	7.6 nm

GREEN SHAPE / FLAG

	To Mark	Heading	Distance
Leg 1	B	030	7.6 nm
Leg 2	C	159	3.6 nm
Leg 3	Finish	237	6.0 nm

All courses are magnetic and all distances are nautical miles. 17.2 nautical miles will be used for handicapping.

D COURSE INSTRUCTIONS

A shape or flag will be displayed from the Race Committee Station as follows:

Red shape or flag: leave marks to Port.

Green shape or flag: leave marks to Starboard.

Boats sailing the D Course shall sail the following course after the start:

RED SHAPE / FLAG

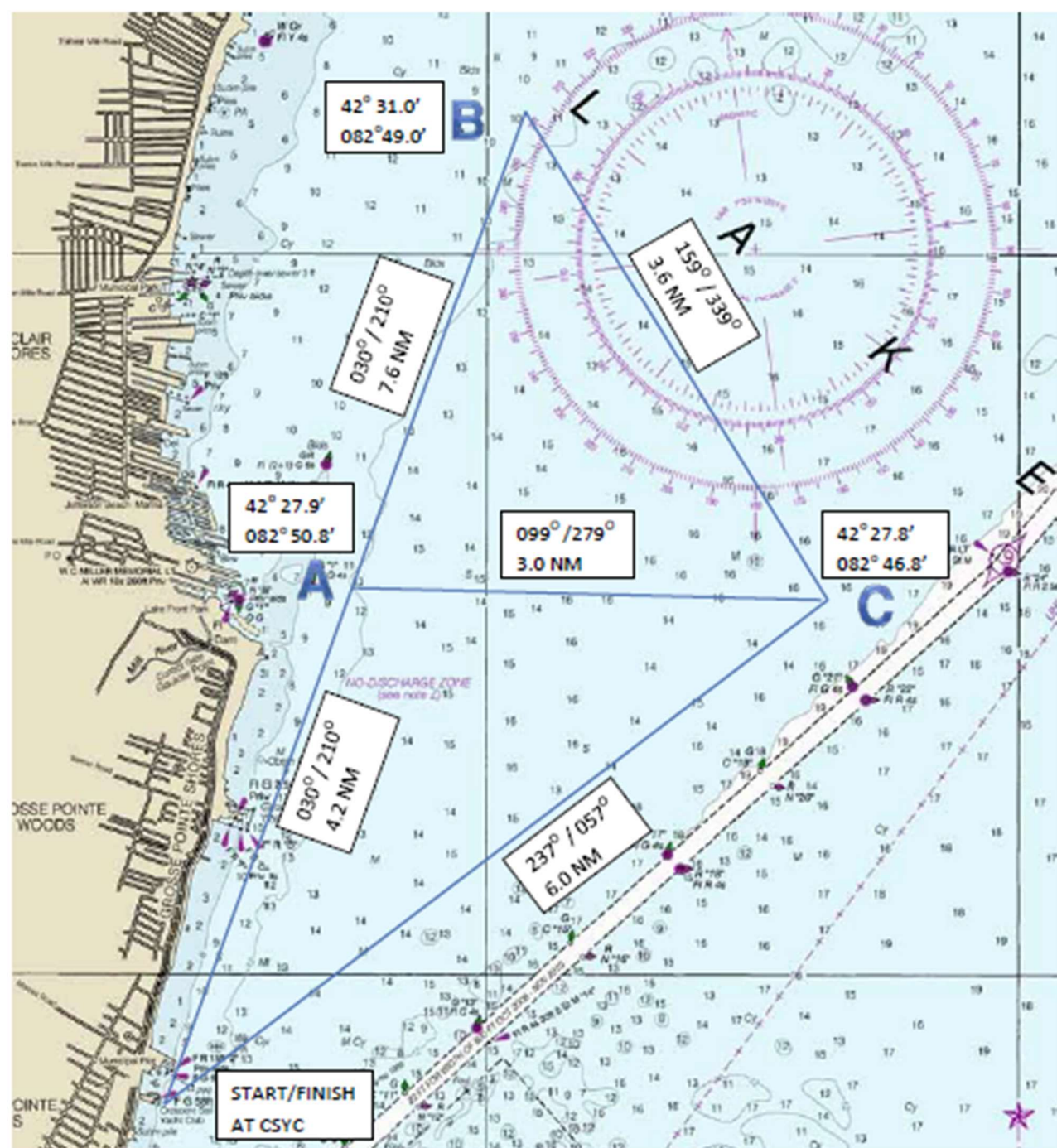
	To Mark	Heading	Distance
Leg 1	C	057	6.0 nm
Leg 2	A	279	3.0 nm
Leg 3	Finish	210	4.2 nm

GREEN SHAPE / FLAG

	To Mark	Heading	Distance
Leg 1	A	030	4.2 nm
Leg 2	C	099	3.0 nm
Leg 3	Finish	237	6.0 nm

All courses are magnetic and all distances are nautical miles. 13.2 nautical miles will be used for handicapping.

CSYC REGATTA D AND E COURSES



This image is NOT to be used for navigation and is not created to any scale.

For handicapping purposes:

"E" Course is 17.2 NM

"D" Course is 13.2 NM

F COURSE INSTRUCTIONS

F COURSE STARTING TIMES

ATTENTION SIGNAL (1 Minute before Warning)
FIRST WARNING SIGNAL 10:30

Start # Class	Course	Start Flag
Multi-hull	Long Course	Class Logo
Star	Short Course	Class Logo
Thistle	Short Course	Class Logo
Lightning	Short Course	Class Logo
Crescent	Short Course	Class Logo
Cal 20	Short Course	Class Logo
Flying Scot	Short Course	Class Logo
Snipe/Other	Short Course	Class Logo

COURSE LOCATION

The starting area shall be located in the area between CSYC and the Grosse Pointe Club, west of the shipping channel. All boats are instructed to locate the main Race Committee Boat which will display Code Flag "L" until it is on station.

COURSE

The course will be a windward-leeward course with a total of four legs. Refer to sailing instruction diagram F Course below. Reference in the diagram to "C" Course shall mean "F" Course. All courses are magnetic and all distances are nautical miles and approximate.

SECOND RACE

Conditions permitting, the Race Committee may have two races. Code Pennant "#2" displayed on the Finishing Line Race Control Boat means that the Race Committee has scheduled a second race. When one or more class flags are displayed below the Code Pennant, the second race is only for the classes whose class flags are displayed.

The Race Committee will attempt to finish the majority of boats in the last race by 1630 hours. When two races are sailed, they shall be scored as prescribed in the DRYA Handbook.

RADIO MONITORING

The "F" Course Race Committee will monitor **VHF 71**.

F COURSE DIAGRAM

COURSE - 1A & 1B
 Short "C" Course: START-1S-2-1S-FINISH
 Long "C" Course: START-1L-2-1L-FINISH

COURSE - 2A & 2B
 Short "C" Course: START-1S-2-1S-FINISH
 Long "C" Course: START-1L-2-1L-FINISH

